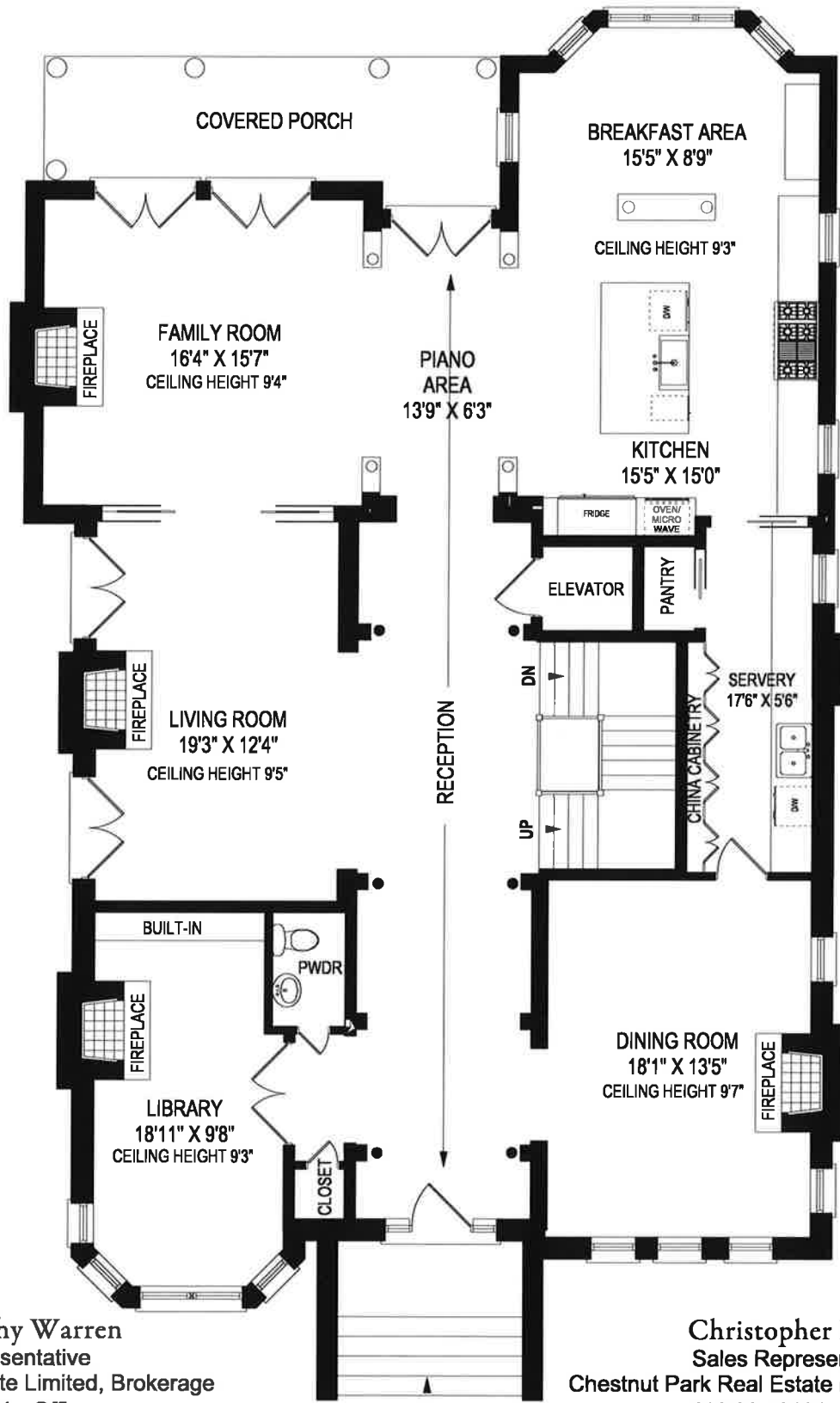


110 Roxborough Drive, Toronto

FLOOR PLAN



MAIN FLOOR
2324 SQUARE FEET

James Strathy Warren
Sales Representative
Chestnut Park Real Estate Limited, Brokerage
416.925.9191 - Office
416.520.5704 - Mobile
james@jameswarren.ca
www.jameswarren.ca

Christopher Killam
Sales Representative
Chestnut Park Real Estate Limited, Brokerage
416.925.9191 - Office
416-333-9878 - Mobile
chris@chriskillam.ca
www.chriskillam.ca

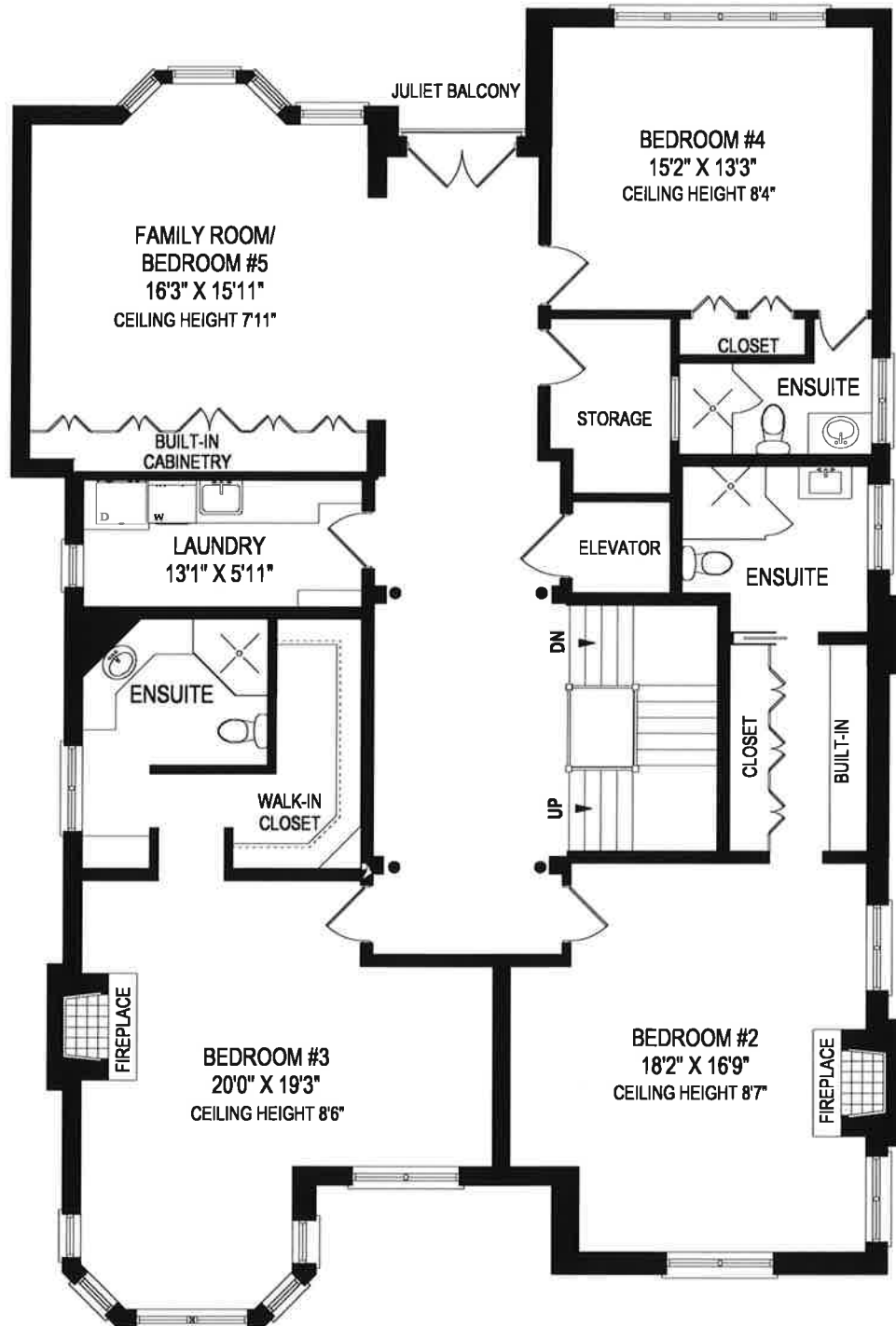
October 29, 2019

Note: Although measurements and area believed to be accurate they should be considered approximate. This drawing was prepared by Plans4U for the sole benefit and use by the client. No third party may rely on this drawing without the receipt of reliance letter from Plans4U

PLANS4U © 2019 PLANSFORYOU
PlansForYou.ca/ info@plansforyou.ca /416.999.5096

110 Roxborough Drive, Toronto

FLOOR PLAN



James Strathy Warren
Sales Representative
Chestnut Park Real Estate Limited, Brokerage
416.925.9191 - Office
416.520.5704 - Mobile
james@jameswarren.ca
www.jameswarren.ca

SECOND FLOOR
2235 SQUARE FEET

Christopher Killam
Sales Representative
Chestnut Park Real Estate Limited, Brokerage
416.925.9191 - Office
416-333-9878 - Mobile
chris@chriskillam.ca
www.chriskillam.ca

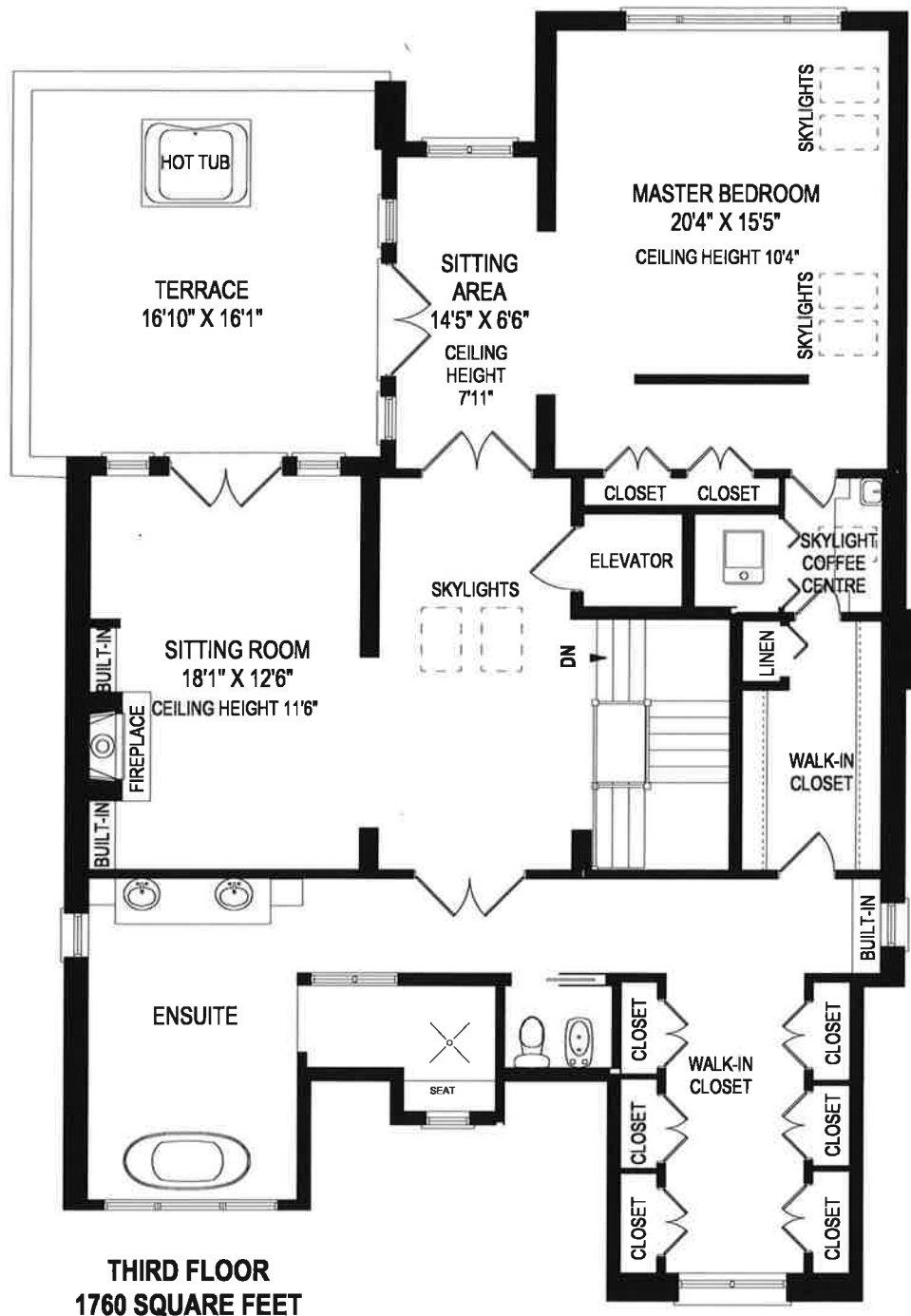
October 29, 2019

Note: Although measurements and area believed to be accurate they should be considered approximate. This drawing was prepared by Plans4U for the sole benefit and use by the client. No third party may rely on this drawing without the receipt of reliance letter from Plans4U

PLANS4U © 2019 PLANSFORYOU
PlansForYou.ca/ info@plansforyou.ca /416.999.5096

110 Roxborough Drive, Toronto

FLOOR PLAN



James Strathy Warren
Sales Representative
Chestnut Park Real Estate Limited, Brokerage
416.925.9191 - Office
416.520.5704 - Mobile
james@jameswarren.ca
www.jameswarren.ca

Christopher Killam
Sales Representative
Chestnut Park Real Estate Limited, Brokerage
416.925.9191 - Office
416-333-9878 - Mobile
chris@chriskillam.ca
www.chriskillam.ca

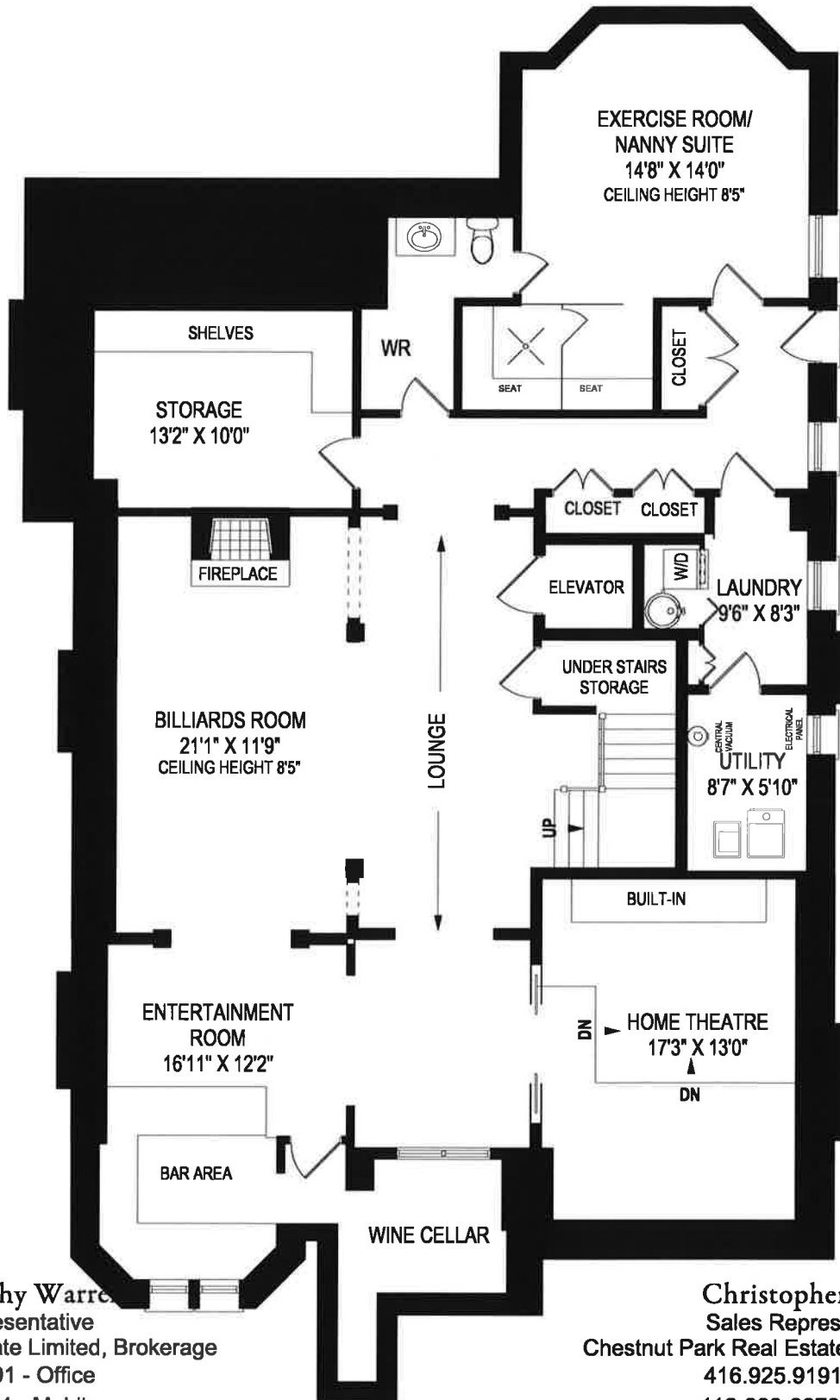
October 28, 2019

Note: Although measurements and area believed to be accurate they should be considered approximate. This drawing was prepared by Plans4U for the sole benefit and use by the client. No third party may rely on this drawing without the receipt of reliance letter from Plans4U

PLANS4U © 2019 PLANSFORYOU
PlansForYou.ca/ info@plansforyou.ca /416.999.5096

110 Roxborough Drive, Toronto

FLOOR PLAN



James Strathy Warren
Sales Representative
Chestnut Park Real Estate Limited, Brokerage
416.925.9191 - Office
416.520.5704 - Mobile
james@jameswarren.ca
www.jameswarren.ca

Christopher Killam
Sales Representative
Chestnut Park Real Estate Limited, Brokerage
416.925.9191 - Office
416-333-9878 - Mobile
chris@chriskillam.ca
www.chriskillam.ca

LOWER LEVEL
2380 SQUARE FEET

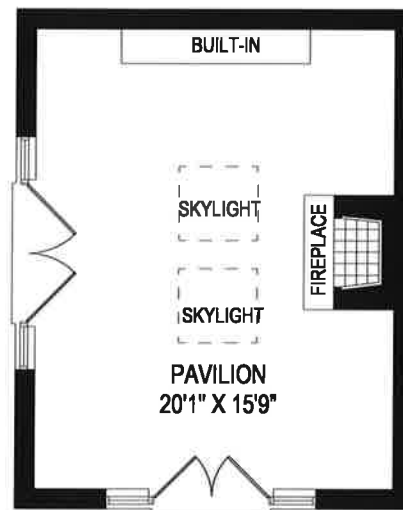
October 28, 2019

Note: Although measurements and area believed to be accurate they should be considered approximate. This drawing was prepared by Plans4U for the sole benefit and use by the client. No third party may rely on this drawing without the receipt of reliance letter from Plans4U

PLANS4U 2019 PLANS4YOU
PlansForYou.ca/ info@plansforyou.ca /416.999.5096

110 Roxborough Drive, Toronto

FLOOR PLAN



PAVILION
382 SQUARE FEET
CEILING HEIGHT 11'1"

James Strathy Warren
Sales Representative
Chestnut Park Real Estate Limited, Brokerage
416.925.9191 - Office
416.520.5704 - Mobile
james@jameswarren.ca
www.jameswarren.ca

October 25, 2019

Note: Although measurements and area believed to be accurate they should be considered approximate. This drawing was prepared by Plans4U for the sole benefit and use by the client. No third party may rely on this drawing without the receipt of reliance letter from Plans4U

Christopher Killam
Sales Representative
Chestnut Park Real Estate Limited, Brokerage
416.925.9191 - Office
416-333-9878 - Mobile
chris@chriskillam.ca
www.chriskillam.ca

PLANS4U © 2019 PLANS4YOU
PlansForYou.ca/ info@plansforyou.ca /416.999.5096